

Great Point Lighthouse #1

by Laura Doyle



Design # **Sizes**
 #8501 14 ct 162 x 227mm (6.38 x 8.93")
 #8502 16 ct 135 x 189mm (5.31 x 7.44")
 #5803 18 ct 126 x 176mm (4.96 x 6.94")
 Total Stitches - 58,176

Stop #	DMC Color Name	Stitch Part	Cotton	Cotton	Rayon	Rayon	Rayon	Polyester
			50wt DMC	60wt Mettler	40wt Sulky	40wt Rob/Ant	40wt Madeira	40wt Isacord
1	Snow White	lighthouse, house	1	2	1001	2297	1002	17
2	Ecu	lighthouse, house	Ecu	*	1071	2342	1072	870
3	Beige Grey Medium	lighthouse, house	644	781	1229	2741	1060	672
4	Beige Grey Dark	lighthouse	642	521POLY	1270	2572	1062	1874
5	Beige Brown Very Dark	lighthouse, house	838	618	1059	2372	1130	1876
6	Garnet Medium	top of lighthouse	815	601	1312	2225	1181	2113
7	Christmas Red	top of lighthouse	321	600	561	2418	1184	2101
8	Beige Light	roof	841	511	1128	2571	1328	1123
9	Hunter Grn Very Dark	grass	895	714	1175	2323	1189	5555
10	Hunter Green	grass	3346	678	1176	2229	1170	5633
11	Yellow Green Medium	grass	3347	546	1177	2456	1169	5833
12	Cream	ground	712	512	1082	2342	1071	870
13	Beige Brown Very Light	ground	842	844	1149	2399	1142	861
14	Sky Blue Very Light	water	747	668	1074	2532	1292	4250
15	Baby Blue Light	sky	3325	962	1289	2300	1075	3840
16	Baby Blue Very Light	lighthouse, sky	775	669	1151	2300	1074	3652
17	Beige Brown Very Dark	b/s lighthouse	838	618	1059	2372	1130	1876
18	Steel Grey Light	b/s windows	318	724	1328	2592	1212	2674

Illustrated to right:
Rope Frame with design #8502



**Machine Cross Stitch
Embroidery**

www.machinecrossstitch.com

Color Stop Thread Sheet

Great Point Lighthouse #2

by Laura Doyle



Design # **Sizes**
 #8504 14 ct 187 x 187mm (7.37 x 7.37")
 #8505 16 ct 156 x 156mm (6.14 x 6.14")
 #8506 18 ct 146 x 146mm (5.73 x 5.73")
 Total Stitches - 52,106

Stop #	DMC Color Name	Stitch Part	Cotton	Cotton	Rayon	Rayon	Rayon	Polyester
			50wt DMC	60wt Mettler	40wt Sulky	40wt Rob/Ant	40wt Madeira	40wt Isacord
1	Snow White	lighthouse, house	1	2	1001	2297	1002	17
2	Ecreu	lighthouse, house	Ecreu	*	1071	2342	1072	870
3	Beige Grey Medium	lighthouse, house	644	781	1229	2741	1060	672
4	Beige Grey Dark	lighthouse	642	521POLY	1270	2572	1062	1874
5	Beige Brown Very Dark	lighthouse, house	838	618	1059	2372	1130	1876
6	Garnet Medium	top of lighthouse	815	601	1312	2225	1181	2113
7	Christmas Red	top of lighthouse	321	600	561	2418	1184	2101
8	Beige Light	roof	841	511	1128	2571	1328	1123
9	Hunter Grn Very Dark	grass	895	714	1175	2323	1189	5555
10	Hunter Green	grass	3346	678	1176	2229	1170	5633
11	Yellow Green Medium	grass	3347	546	1177	2456	1169	5833
12	Beige Brown Very Light	ground	842	844	1149	2399	1142	861
13	Sky Blue Very Light	water	747	668	1074	2532	1292	4250
14	Baby Blue Light	sky	3325	962	1289	2300	1075	3840
15	Baby Blue Very Light	sky, lighthouse top	775	669	1151	2300	1074	3652
16	Pearl Grey Very Light	optional border	762	749	1268	2539	1151	182
17	Pearl Grey	optional border	415	749	1236	2485	1198	142
18	Steel Grey Light	optional border	318	724	1328	2592	1212	2674
19	Beige Brown Very Dark	b/s lighthouse	838	618	1059	2372	1130	1876
20	Steel Grey Light	b/s windows	318	724	1328	2592	1212	2674



**Machine Cross Stitch
Embroidery**

www.machinecrossstitch.com

See pages 20-21 for Project Ideas

©2009 Sudberry House LLC. All rights reserved



Sankaty Lighthouse #1

by Laura Doyle

Design #

Sizes

#8507 14 ct 162 x 212mm (6.38 x 8.36")

#8508 16 ct 135 x 177mm (5.31 x 6.97")

#8509 18 ct 126 x 165mm (4.96 x 6.50")

Total Stitches - 52,856

Stop #	DMC Color Name	Stitch Part	Cotton	Cotton	Rayon	Rayon	Rayon	Polyester
			50wt DMC	60wt Mettler	40wt Sulky	40wt Rob/Ant	40wt Madeira	40wt Isacord
1	Snow White	lighthouse	1	2	1001	2297	1002	17
2	Pearl Grey Very Light	lighthouse	762	749	1268	2539	1151	182
3	Pearl Grey	lighthouse	415	749	1236	2485	1198	142
4	Garnet	lighthouse	816	838	1190	2249	1381	1912
5	Christmas Red	lighthouse	321	600	561	2418	1184	2101
6	Christmas Red Bright	lighthouse	666	739	1147	2420	1037	1704
7	Carnation Medium	lighthouse	892	921	1188	2248	1117	1805
8	Pewter Grey Dark	lighthouse	413	700	1166	2407	1164	132
9	Topaz Medium	top of lighthouse	783	828POLY	567	2331	1372	824
10	Topaz Dark	lighthouse	782	829	523	2295	1173	922
11	Black	lighthouse	310	3	1005	2296	1000	20
12	Hunter Grn Very Dark	grass	895	714	1175	2323	1189	5555
13	Yellow Green Medium	grass	3347	546	1177	2456	1169	5833
14	Yellow Green Light	grass	3348	893	1104	2547	1150	6051
15	Cream	ground	712	512	1082	2342	1071	870
16	Beige Grey Light	ground	822	844	1082	2539	1138	670
17	Beige Grey Medium	ground	644	781	1229	2741	1060	672
18	Beige Grey Dark	ground	642	521POLY	1270	2572	1062	1874
19	Beige Grey Very Dark	ground	640	698	1180	2477	1063	6156
20	Sky Blue Very Light	water	747	668	1074	2532	1292	4250
21	Baby Blue Very Light	sky	775	669	1151	2300	1074	3652
22	Black	b/s lighthouse	310	3	1005	2296	1000	20



Sankaty Lighthouse #2

by Laura Doyle



Design #

Sizes

#8510 14 ct 187 x 187mm (7.37 x 7.37")

#8511 16 ct 156 x 156mm (6.14 x 6.14")

#8512 18 ct 146 x 146mm (5.73 x 5.73")

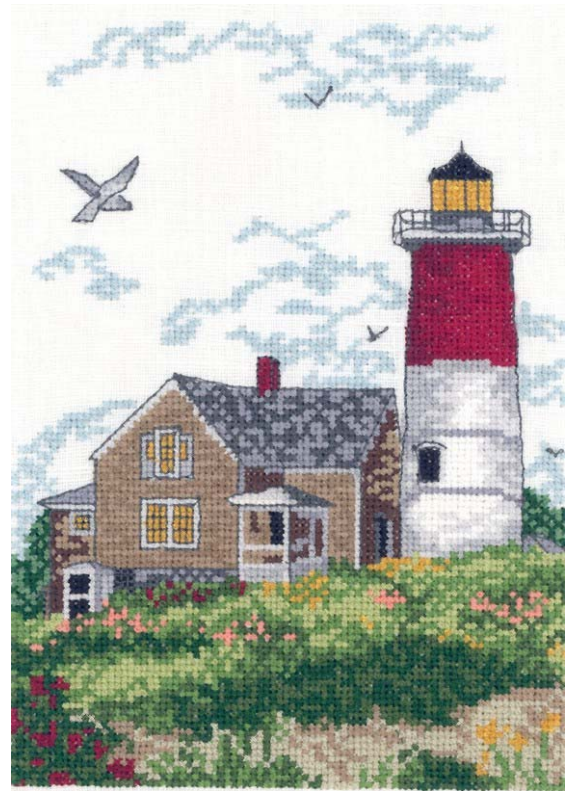
Total Stitches - 46,618

Stop #	DMC Color Name	Stitch Part	Cotton	Cotton	Rayon	Rayon	Rayon	Polyester
			50wt DMC	60wt Mettler	40wt Sulky	40wt Rob/Ant	40wt Madeira	40wt Isacord
1	Snow White	lighthouse	1	2	1001	2297	1002	17
2	Pearl Grey Very Light	lighthouse	762	749	1268	2539	1151	182
3	Pearl Grey	lighthouse	415	749	1236	2485	1198	142
4	Garnet	lighthouse	816	838	1190	2249	1381	1912
5	Christmas Red	lighthouse	321	600	561	2418	1184	2101
6	Christmas Red Bright	lighthouse	666	739	1147	2420	1037	1704
7	Carnation Medium	lighthouse	892	921	1188	2248	1117	1805
8	Pewter Grey Dark	lighthouse	413	700	1166	2407	1164	132
9	Topaz Medium	top of lighthouse	783	828POLY	567	2331	1372	824
10	Topaz Dark	lighthouse	782	829	523	2295	1173	922
11	Black	lighthouse	310	3	1005	2296	1000	20
12	Hunter Grn Very Dark	grass	895	714	1175	2323	1189	5555
13	Yellow Green Medium	grass	3347	546	1177	2456	1169	5833
14	Yellow Green Light	grass	3348	893	1104	2547	1150	6051
15	Cream	ground	712	512	1082	2342	1071	870
16	Beige Grey Light	ground	822	844	1082	2539	1138	670
17	Beige Grey Dark	ground	642	521POLY	1270	2572	1062	1874
18	Beige Grey Very Dark	ground	640	698	1180	2477	1063	6156
19	Sky Blue Very Light	sky	747	668	1074	2532	1292	4250
20	Baby Blue Very Light	sky	775	669	1151	2300	1074	3652
21	Pearl Grey Very Light	optional border	762	749	1268	2539	1151	182
22	Steel Grey Light	optional border	318	724	1328	2592	1212	2674
23	Pearl Grey	optional border	415	749	1236	2485	1198	142
24	Black	b/s lighthouse	310	3	1005	2296	1000	20



Nauset Lighthouse

by Laura Doyle



Design # **Sizes**
 #8513 14 ct 155 x 214mm (6.09 x 8.43")
 #8514 16 ct 129 x 179mm (5.08 x 7.03")
 #8515 18 ct 120 x 167mm (4.74 x 6.56")
 Total Stitches - 65,060

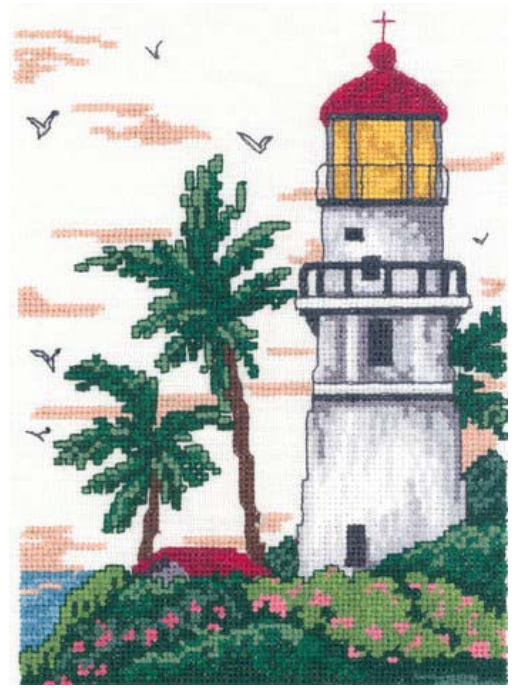
Stop #	DMC Color Name	Stitch Part	Cotton	Cotton	Rayon	Rayon	Rayon	Polyester
			50wt DMC	60wt Mettler	40wt Sulky	40wt Rob/Ant	40wt Madeira	40wt Isacord
1	Beige Light	house	841	511	1128	2571	1328	1123
2	Beige Brown Medium	house	840	839	1267	2474	1329	1055
3	Beige Brown Very Dark	house	838	618	1059	2372	1130	1876
4	Snow White	house, lighthouse	1	2	1001	2297	1002	17
5	Pearl Grey Very Light	house, light, gull	762	749	1268	2539	1151	182
6	Pearl Grey	house, light, gull	415	749	1236	2485	1198	142
7	Steel Grey Light	house, light, gull	318	724	1328	2592	1212	2674
8	Pewter Grey Dark	house, lighthouse	413	700	1166	2407	1164	132
9	Black	house, lighthouse	310	3	1005	2296	1000	20
10	Christmas Red Medium	lighthouse	304	838	1311	2270	1186	1911
11	Christmas Red Dark	light, chimney,flwer	498	601	1169	2622	1183	1912
12	Garnet Dark	light, chimney,flwer	814	738	1035	2252	1389	2222
13	Coral Light	flowers	352	646	1259	2257	1254	1532
14	Topaz Medium	window, flowers	783	828POLY	567	2331	1372	824
15	Baby Blue Very Light	sky	775	669	1151	2300	1074	3652
16	Pistachio Grn Medium	trees	320	549	1276	2278	1098	5101
17	Yellow Green Light	grass	3348	893	1104	2547	1150	6051
18	Yellow Green Medium	grass	3347	546	1177	2456	1169	5833
19	Hunter Green	grass	3346	678	1176	2229	1170	5633
20	Hunter Grn Very Dark	grass, trees	895	714	1175	2323	1189	5555
21	Beige Grey Medium	ground	644	781	1229	2741	1060	672
22	Pewter Grey Dark	b/s all	413	700	1166	2407	1164	132

See pages 20-21 for Project Ideas

Color Stop Thread Sheet

Hawaiian Lighthouse

by Laura Doyle



Design

Sizes

#8516 14 ct 155 x 212mm (6.09 x 8.36")

#8517 16 ct 129 x 177mm (5.08 x 6.97")

#8518 18 ct 120 x 165mm (4.74 x 6.50")

Total Stitches - 62,804

Stop #	DMC Color Name	Stitch Part	Cotton	Cotton	Rayon	Rayon	Rayon	Polyester
			50wt DMC	60wt Mettler	40wt Sulky	40wt Rob/Ant	40wt Madeira	40wt Isacord
1	Snow White	lighthouse	1	2	1001	2297	1002	17
2	Pearl Grey Very Light	lighthouse	762	749	1268	2539	1151	182
3	Pearl Grey	lighthouse	415	749	1236	2485	1198	142
4	Steel Grey Light	lighthouse, house	318	724	1328	2592	1212	2674
5	Pewter Very Dark	lighthouse, house	876	700	1220	2565	1241	4174
6	Topaz	top lighthouse	725	767	1167	2596	1171	506
7	Topaz Medium	top lighthouse	783	828POLY	567	2331	1372	824
8	Rose Medium	flowers	899	805	1117	2375	1108	1755
9	Rose	flowers	335	923	1307	2237	1309	2320
10	Christmas Red	roof	321	600	561	2418	1184	2101
11	Garnet	roof	816	838	1190	2249	1381	1912
12	Pistachio Grn Ultra D.	trees, bushes	890	714	1103	2631	1103	5374
13	Christmas Green	trees, bushes	699	678	1051	2208	1250	5422
14	Pistachio Grn Medium	trees, bushes	320	549	1276	2278	1098	5101
15	Blue Green Dark	bushes	501	539	1286	2549	1052	5233
16	Hunter Green	bushes	3346	678	1176	2229	1170	5633
17	Yellow Green Med	bushes	3347	546	1177	2456	1169	5833
18	Coffee Brown Dark	tree trunk	801	711	1129	2629	1145	1346
19	Wedgewood Light	water	518	890	1201	2308	1096	4101
20	Sky Blue	water	519	671POLY	1145	2239	1373	3910
21	Peach Light	sky	754	591	1258	2413	1018	1351
22	Pewter Very Dark	b/s lighthouse, gulls	876	700	1220	2565	1241	4174
23	Garnet	b/s roof	816	838	1190	2249	1381	1912
24	Pistachio Grn Ultra D.	b/s trees, bushes	890	714	1103	2631	1103	5374
25	Coffee Brown Dark	b/s tree trunk	801	711	1129	2629	1145	1346

See pages 20-21 for Project Ideas

Color Stop Thread Sheet

Eastern Lighthouse

by Laura Doyle



Design

Sizes

#8519 14 ct 148 x 216mm (5.81 x 8.50")

#8520 16 ct 123 x 180mm (4.84 x 7.09")

#8521 18 ct 115 x 168mm (4.52 x 6.61")

Total Stitches - 69,170

Stop #	DMC Color Name	Stitch Part	Cotton	Cotton	Rayon	Rayon	Rayon	Polyester
			50wt DMC	60wt Mettler	40wt Sulky	40wt Rob/Ant	40wt Madeira	40wt Isacord
1	Pearl Grey	lighthouse, gulls	415	749	1236	2485	1198	142
2	Steel Grey Light	lighthouse	318	724	1328	2592	1212	2674
3	Steel Grey Dark	lighthouse, gulls	414	684POLY	1329	2540	1363	152
4	Pewter Grey Dark	lighthouse	413	700	1166	2407	1164	132
5	Christmas Red Dark	lighthouse	498	601	1169	2622	1183	1912
6	Garnet Medium	lighthouse	815	601	1312	2225	1181	2113
7	Garnet Very Dark	lighthouse	902	738	1214	2496	1385	2115
8	Black	lighthouse	310	3	1005	2296	1000	20
9	Topaz Dark	top of lighthouse	782	829	523	2295	1173	922
10	Topaz Medium	top of lighthouse	783	828POLY	567	2331	1372	824
11	Topaz	top, sky	725	767	1167	2596	1171	506
12	Coral Light	sky	352	646	1259	2257	1254	1532
13	Hunter Green	grass	3346	678	1176	2229	1170	5633
14	Hunter Grn Very Dark	grass	895	714	1175	2323	1189	5555
15	Blue Green Dark	grass	501	539	1286	2549	1052	5233
16	Beige Brown Very Dark	ground	838	618	1059	2372	1130	1876
17	Royal Blue Dark	water	796	885	1293	2437	1166	3622
18	Delft Blue Dark	water	798	790	526	2384	1134	3600
19	Snow White	sky	1	2	1001	2297	1002	17
20	Pewter Grey Dark	b/s gulls	413	700	1166	2407	1164	132
21	Garnet Very Dark	b/s top	902	738	1214	2496	1385	2115
22	Black	b/s doorway	310	3	1005	2296	1000	20

See pages 20-21 for Project Ideas

Color Stop Thread Sheet

Cape Elizabeth Lighthouse

by Jean Lanning



Design # **Sizes**
 #8522 14 ct 155 x 176mm (6.09 x 6.94")
 #8523 16 ct 129 x 147mm (5.08 x 5.79")
 #8524 18 ct 120 x 137mm (4.74 x 5.40")
 Total Stitches - 41,524

Stop #	DMC Color Name	Stitch Part	Cotton	Cotton	Rayon	Rayon	Rayon	Polyester
			50wt DMC	60wt Mettler	40wt Sulky	40wt Rob/Ant	40wt Madeira	40wt Isacord
1	Snow White	lighthouse	1	2	1001	2297	1002	17
2	Beige Grey Light	lighthouse	822	844	1082	2539	1138	670
3	Beige Grey Medium	lighthouse	644	781	1229	2741	1060	672
4	Beige Grey Dark	lighthouse	642	521POLY	1270	2572	1062	1874
5	Beige Grey Very Dark	roof, lighthouse	640	698	1180	2477	1063	6156
6	Beige Brown Medium	roof, lighthouse	840	839	1267	2474	1329	1055
7	Beige Brown Very Dark	roof, lighthouse	838	618	1059	2372	1130	1876
8	Black Brown	roof, lighthouse	3371	618	1131	2566	1328	1366
9	Black	top of lighthouse	310	3	1005	2296	1000	20
10	Yellow Green Medium	grass	3347	546	1177	2456	1169	5833
11	Hunter Green	grass	3346	678	1176	2229	1170	5633
12	Hunter Grn Very Dark	grass, tree	895	714	1175	2323	1189	5555
13	Black	b/s all	310	3	1005	2296	1000	20

Illustrated to right:
 Sudberry Small Square Tray
 #68001 with design #8523



www.machinecrossstitch.com

Color Stop Thread Sheet

Portland Head Lighthouse

by Jean Lanning

Design # **Sizes**
 #8525 14 ct 212 x 121mm (8.36 x 4.75")
 #8526 16 ct 177 x 101mm (6.97 x 3.96")
 #8527 18 ct 165 x 94mm (6.50 x 3.69")
 Total Stitches - 48,154



Stop #	DMC Color Name	Stitch Part	Cotton	Cotton	Rayon	Rayon	Rayon	Polyester
			50wt DMC	60wt Mettler	40wt Sulky	40wt Rob/Ant	40wt Madeira	40wt Isacord
1	Snow White	house, light, water	1	2	1001	2297	1002	17
2	Pearl Grey Very Light	house, light, sky	762	749	1268	2539	1151	182
3	Pearl Grey	house, lighthouse	415	749	1236	2485	1198	142
4	Steel Grey Dark	house, light, boat	414	684POLY	1329	2540	1363	152
5	Christmas Red	roofs	321	600	561	2418	1184	2101
6	Christmas Red Dark	roofs	498	601	1169	2622	1183	1912
7	Hunter Green	grass	3346	678	1176	2229	1170	5633
8	Beige Brown Very Dark	cliff	838	618	1059	2372	1130	1876
9	Beige Brown Medium	cliff	840	839	1267	2474	1329	1055
10	Beige Light	cliff	841	511	1128	2571	1328	1123
11	Beige Brown Very Light	cliff	842	844	1149	2399	1142	861
12	Baby Blue Very Light	water	775	669	1151	2300	1074	3652
13	Wedgewood Dark	water	517	901	1134	2441	1296	3902
14	Wedgewood Light	water	518	890	1201	2308	1096	4101
15	Sky Blue	water	519	671POLY	1145	2239	1373	3910
16	Baby Blue Light	sky	3325	962	1289	2300	1075	3840
17	Lavender Light	sky	211	575	1111	2379	1232	3040
18	Baby Pink	sky	818	610	1064	2223	1121	2160
19	Pewter Grey Dark	b/s house, light, sail	413	700	1166	2407	1164	132

Illustrated to right:
 White Frame with design #8526



**Machine Cross Stitch
 Embroidery**

www.machinecrossstitch.com

©2009 Sudberry House LLC. All rights reserved



*Color Stop Thread Sheet***Point Loma Lighthouse***by Jean Lanning*

Design # **Sizes**
 #8528 14 ct 214 x 112mm (8.43 x 4.39")
 #8529 16 ct 179 x 93mm (7.03 x 3.66")
 #8530 18 ct 167 x 87mm (6.56 x 3.42")
 Total Stitches - 48,410

Stop #	DMC Color Name	Stitch Part	Cotton	Cotton	Rayon	Rayon	Rayon	Polyester
			50wt DMC	60wt Mettler	40wt Sulky	40wt Rob/Ant	40wt Madeira	40wt Isacord
1	Snow White	bridge, fence, house	1	2	1001	2297	1002	17
2	Pearl Grey Very Light	bridge, house	762	749	1268	2539	1151	182
3	Steel Grey Light	lighthouse	318	724	1328	2592	1212	2674
4	Coral Medium	flowers	350	913	1020	2329	1307	1701
5	Christmas Red Bright	flowers, top	666	739	1147	2420	1037	1704
6	Christmas Green	grass, roofs	699	678	1051	2208	1250	5422
7	Pistachio Grn Ultra D.	grass, roofs, tree	890	714	1103	2631	1103	5374
8	Pistachio Grn Medium	grass, tree	320	549	1276	2278	1098	5101
9	Pistachio Grn Light	grass, tree	368	544	1100	2311	1047	5115
10	Beige Brown Very Dark	tree trunk	838	618	1059	2372	1130	1876
11	Garnet Dark	chimneys, bridge	814	738	1035	2252	1389	2222
12	Baby Blue Very Dark	bridge, window	312	498	1076	2612	1042	3611
13	Chartreuse Bright	grass	704	903	1332	2321	1248	5610
14	Kelly Green	grass	702	952	1277	2738	1251	5510
15	Bright Green	grass	700	795	1278	2453	1079	5415
16	Baby Blue Medium	brdge, water, wind	334	788	1028	2624	1028	3641
17	Baby Blue Light	brdg,wter,wind,sky	3325	962	1289	2300	1075	3840
18	Baby Blue Very Light	water	775	669	1151	2300	1074	3652
19	Pistachio Grn Ultra D.	b/s roofs	890	714	1103	2631	1103	5374
20	Beige Brown Very Dark	b/s tree trunk	838	618	1059	2372	1130	1876
21	Pewter Grey Dark	b/s brdg, hse, fence	413	700	1166	2407	1164	132

Illustrated to right:
 White Frame with design #8529



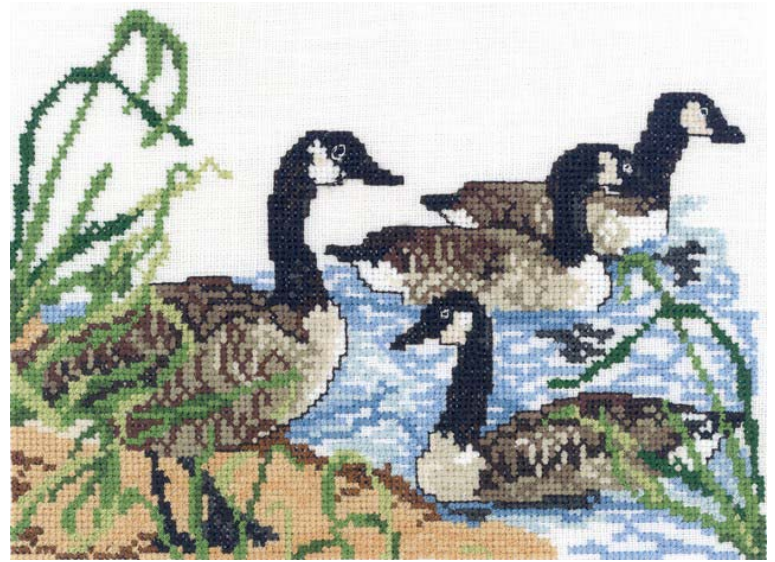
**Machine Cross Stitch
 Embroidery**

www.machinecrossstitch.com

Canadian Geese

by Donna Giampa

Design # **Sizes**
 #8531 14 ct 214 x 155mm (8.43 x 6.09")
 #8532 16 ct 179 x 129mm (7.03 x 5.08")
 #8533 18 ct 167 x 120mm (6.56 x 4.74")
 Total Stitches - 62,752



Stop #	DMC Color Name	Stitch Part	Cotton	Cotton	Rayon	Rayon	Rayon	Polyester
			50wt DMC	60wt Mettler	40wt Sulky	40wt Rob/Ant	40wt Madeira	40wt Isacord
1	Snow White	geese	1	2	1001	2297	1002	17
2	Beige Grey Light	geese	822	844	1082	2539	1138	670
3	Beige Grey Medium	geese	644	781	1229	2741	1060	672
4	Beige Grey Dark	geese	642	521POLY	1270	2572	1062	1874
5	Beige Grey Very Dark	geese	640	698	1180	2477	1063	6156
6	Beige Brown Very Dark	geese	838	618	1059	2372	1130	1876
7	Black Brown	geese	3371	618	1131	2566	1328	1366
8	Pewter Very Dark	geese, water	876	700	1220	2565	1241	4174
9	Black	geese	310	3	1005	2296	1000	20
10	Brown Medium	ground	433	711	1057	2402	1058	1342
11	Tan Very Light	ground	738	520	1055	2582	1055	1140
12	Tan Light	ground	437	517	562	2203	1256	1141
13	Yellow Green Light	grass	3348	893	1104	2547	1150	6051
14	Yellow Green Medium	grass	3347	546	1177	2456	1169	5833
15	Hunter Green	grass	3346	678	1176	2229	1170	5633
16	Hunter Grn Very Dark	grass	895	714	1175	2323	1189	5555
17	Baby Blue Very Light	water	775	669	1151	2300	1074	3652
18	Baby Blue Light	water	3325	962	1289	2300	1075	3840
19	Baby Blue Medium	water	334	788	1028	2624	1028	3641
20	Snow White	b/s eyes	1	2	1001	2297	1002	17
21	Black Brown	b/s geese	3371	618	1131	2566	1328	1366



**Machine Cross Stitch
Embroidery**

www.machinecrossstitch.com

Illustrated to right:
White Frame with design #8532



Color Stop Thread Sheet

Lighthouse and Beach

by Laura Doyle

Design

Sizes

#8534 14 ct 112 x 112mm (4.39 x 4.39")

#8535 16 ct 93 x 93mm (3.66 x 3.66")

#8536 18 ct 87 x 87mm (3.42 x 3.42")

Total Stitches - 21,984



Stop #	DMC Color Name	Stitch Part	Cotton	Cotton	Rayon	Rayon	Rayon	Polyester
			50wt DMC	60wt Mettler	40wt Sulky	40wt Rob/Ant	40wt Madeira	40wt Isacord
1	Snow White	lighthouse, gull	1	2	1001	2297	1002	17
2	Pearl Grey	lighthouse, gull	415	749	1236	2485	1198	142
3	Steel Grey Dark	lighthouse, gull	414	684POLY	1329	2540	1363	152
4	Garnet Medium	lighthouse	815	601	1312	2225	1181	2113
5	Black	window gull	310	3	1005	2296	1000	20
6	Cranberry Very Light	flowers	605	803POLY	1108	2502	1116	2560
7	Hunter Green	grass, trees	3346	678	1176	2229	1170	5633
8	Yellow Green Light	grass	3348	893	1104	2547	1150	6051
9	Yellow Green Medium	grass, trees	3347	546	1177	2456	1169	5833
10	Pistach Grn Very Dark	grass	319	850	1174	2392	1370	5555
11	Pistachio Grn Medium	grass	320	549	1276	2278	1098	5101
12	Baby Blue Very Light	water	775	669	1151	2300	1074	3652
13	Tan Very Light	sand	738	520	1055	2582	1055	1140
14	Tan Light	weeds	437	517	562	2203	1256	1141
15	Brown Very Light	weeds	435	658	1126	2400	1126	941
16	Brown Medium	weeds	433	711	1057	2402	1058	1342
17	Peach Light	sky	754	591	1258	2413	1018	1351
18	Steel Grey Dark	b/s lighthouse, gulls	414	684POLY	1329	2540	1363	152
19	Garnet Medium	b/s lighthouse	815	601	1312	2225	1181	2113
20	Black	b/s spike, gulls	310	3	1005	2296	1000	20



**Machine Cross Stitch
Embroidery**

www.machinecrossstitch.com

©2009 Sudberry House LLC. All rights reserved

See pages 20-21 for Project Ideas

Color Stop Thread Sheet

Matching Pair with Beach

by Laura Doyle



Design # **Sizes**
 #8537 14 ct 119 x 104mm (4.68 x 4.11")
 #8538 16 ct 99 x 87mm (3.90 x 3.43")
 #8539 18 ct 92 x 81mm (3.64 x 3.20")
 Total Stitches - 22,166

Stop #	DMC Color Name	Stitch Part	Cotton	Cotton	Rayon	Rayon	Rayon	Polyester
			50wt DMC	60wt Mettler	40wt Sulky	40wt Rob/Ant	40wt Madeira	40wt Isacord
1	Snow White	lighthouse, sky, gulls	1	2	1001	2297	1002	17
2	Pearl Grey Very Light	lighthouse, gulls	762	749	1268	2539	1151	182
3	Pearl Grey	lighthouse, gulls	415	749	1236	2485	1198	142
4	Steel Grey Light	lighthouse	318	724	1328	2592	1212	2674
5	Christmas Red	lighthouse	321	600	561	2418	1184	2101
6	Black	windows	310	3	1005	2296	1000	20
7	Yellow Green Light	trees, grass	3348	893	1104	2547	1150	6051
8	Yellow Green Medium	trees, grass	3347	546	1177	2456	1169	5833
9	Hunter Green	trees	3346	678	1176	2229	1170	5633
10	Tan Light	sand	437	517	562	2203	1256	1141
11	Tan Very Light	sand	738	520	1055	2582	1055	1140
12	Tan Ultra Very Light	sand	739	515	1127	2335	1149	761
13	Baby Blue Very Light	sky	775	669	1151	2300	1074	3652
14	Baby Blue Light	water	3325	962	1289	2300	1075	3840
15	Baby Blue Medium	water	334	788	1028	2624	1028	3641
16	Steel Grey Light	b/s lighthouse, gulls	318	724	1328	2592	1212	2674
17	Black	b/s railing	310	3	1005	2296	1000	20
18	Hunter Green	b/s grass	3346	678	1176	2229	1170	5633

Illustrated to right:
 Sudberry Octagon Box
 #99381 with design #8538



www.machinecrossstitch.com

Matching Pair with Canoe

by Laura Doyle



Design # **Sizes**
 #8540 14 ct 119 x 104mm (4.68 x 4.11")
 #8541 16 ct 99 x 87mm (3.90 x 3.43")
 #8542 18 ct 92 x 81mm (3.64 x 3.20")
 Total Stitches - 20,398

Stop #	DMC Color Name	Stitch Part	Cotton	Cotton	Rayon	Rayon	Rayon	Polyester
			50wt DMC	60wt Mettler	40wt Sulky	40wt Rob/Ant	40wt Madeira	40wt Isacord
1	Snow White	lighthouse, sky, gulls	1	2	1001	2297	1002	17
2	Pearl Grey Very Light	lighthouse, gulls, boat	762	749	1268	2539	1151	182
3	Pearl Grey	lighthouse, gulls, boat	415	749	1236	2485	1198	142
4	Steel Grey Light	lighthouse, boat	318	724	1328	2592	1212	2674
5	Black	lighthouse	310	3	1005	2296	1000	20
6	Christmas Red	lighthouse, boat	321	600	561	2418	1184	2101
7	Garnet Medium	lighthouse, boat	815	601	1312	2225	1181	2113
8	Tan Ultra Very Light	sand	739	515	1127	2335	1149	761
9	Tan Very Light	sand	738	520	1055	2582	1055	1140
10	Yellow Green Light	trees, grass	3348	893	1104	2547	1150	6051
11	Yellow Green Medium	trees, grass	3347	546	1177	2456	1169	5833
12	Hunter Green	trees, grass	3346	678	1176	2229	1170	5633
13	Baby Blue Very Light	sky	775	669	1151	2300	1074	3652
14	Baby Blue Light	water	3325	962	1289	2300	1075	3840
15	Baby Blue Medium	water	334	788	1028	2624	1028	3641
16	Steel Grey Light	b/s boat, house, gulls	318	724	1328	2592	1212	2674
17	Tan	b/s grass	436	507	1313	2493	1056	832

Illustrated to right:
 Sudberry Octagon Box
 #99381 with design #8541



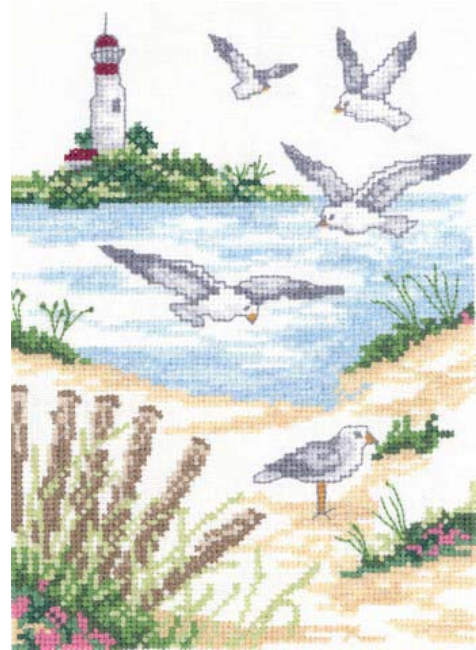
**Machine Cross Stitch
 Embroidery**

www.machinecrossstitch.com

Color Stop Thread Sheet

Seascape with Fence

by Laura Doyle



Design

Sizes

#8543 14 ct 155 x 212mm (6.09 x 8.36")

#8544 16 ct 129 x 177mm (5.08 x 6.97")

#8545 18 ct 120 x 165mm (4.74 x 6.50")

Total Stitches - 56,692

Stop #	DMC Color Name	Stitch Part	Cotton	Cotton	Rayon	Rayon	Rayon	Polyester
			50wt DMC	60wt Mettler	40wt Sulky	40wt Rob/Ant	40wt Madeira	40wt Isacord
1	Snow White	lighthouse, gulls	1	2	1001	2297	1002	17
2	Pearl Grey Very Light	lighthouse, gulls	762	749	1268	2539	1151	182
3	Pearl Grey	lighthouse, gulls	415	749	1236	2485	1198	142
4	Steel Grey Light	lighthouse, gulls	318	724	1328	2592	1212	2674
5	Steel Grey Dark	lighthouse, gulls	414	684POLY	1329	2540	1363	152
6	Garnet Medium	lighthouse	815	601	1312	2225	1181	2113
7	Topaz Medium	gulls	783	828POLY	567	2331	1372	824
8	Yellow Green Light	grass	3348	893	1104	2547	1150	6051
9	Yellow Green Medium	grass	3347	546	1177	2456	1169	5833
10	Hunter Green	grass	3346	678	1176	2229	1170	5633
11	Pistachio Grn Medium	grass, trees	320	549	1276	2278	1098	5101
12	Pistachio Grn Very Dark	grass, trees	319	850	1174	2392	1370	5555
13	Delft Blue Pale	water	800	962	1223	2525	1274	3761
14	Baby Blue Very Light	water	775	669	1151	2300	1074	3652
15	Mauve Medium	flowers	3688	227	1117	2375	1309	2153
16	Beige Brown Medium	fence	840	839	1267	2474	1329	1055
17	Beige Light	fence	841	511	1128	2571	1328	1123
18	Beige Brown Very Light	fence	842	844	1149	2399	1142	861
19	Tan Very Light	sand	738	520	1055	2582	1055	1140
20	Tan Ultra Very Light	sand	739	515	1127	2335	1149	761
21	Steel Grey Dark	b/s gulls, house	414	684POLY	1329	2540	1363	152
22	Yellow Green Medium	b/s grass	3347	546	1177	2456	1169	5833



Machine Cross Stitch
Embroidery

www.machinecrossstitch.com

See pages 20-21 for Project Ideas

©2009 Sudberry House LLC. All rights reserved

Color Stop Thread Sheet

Shore Birds

by Donna Giampa

Design # **Sizes**
 #8546 14 ct 214 x 157mm (8.43 x 5.95")
 #8547 16 ct 179 x 126mm (7.03 x 4.96")
 #8548 18 ct 167 x 118mm (6.56 x 4.63")
 Total Stitches - 68,314



Stop #	DMC Color Name	Stitch Part	Cotton	Cotton	Rayon	Rayon	Rayon	Polyester
			50wt DMC	60wt Mettler	40wt Sulky	40wt Rob/Ant	40wt Madeira	40wt Isacord
1	Snow White	birds, ground	1	2	1001	2297	1002	17
2	Pearl Grey Very Light	birds, ground	762	749	1268	2539	1151	182
3	Pewter	birds, ground	380	725	1011	5802	1118	145
4	Dark Pewter	birds, ground	378	623	1040	2484	1041	112
5	Pewter Very Dark	birds, ground	876	700	1220	2565	1241	4174
6	Black	birds	310	3	1005	2296	1000	20
7	Brown Very Light	birds	435	658	1126	2400	1126	941
8	Brown Medium	birds	433	711	1057	2402	1058	1342
9	Coffee Brown Dark	birds	801	711	1129	2629	1145	1346
10	Topaz Medium	legs, beaks	783	828POLY	567	2331	1372	824
11	Tan Ultra Very Light	ground	739	515	1127	2335	1149	761
12	Tan Very Light	ground	738	520	1055	2582	1055	1140
13	Beige Brown Very Light	ground	842	844	1149	2399	1142	861
14	Beige Light	ground	841	511	1128	2571	1328	1123
15	Hunter Green	grass	3346	678	1176	2229	1170	5633
16	Yellow Green Medium	grass	3347	546	1177	2456	1169	5833
17	Baby Blue Very Light	water, sky	775	669	1151	2300	1074	3652
18	Blue Green Medium	water	503	561	1305	2278	1088	5552
19	Baby Blue Light	water, sky	3325	962	1289	2300	1075	3840
20	Baby Blue Medium	water	334	788	1028	2624	1028	3641
21	Dark Pewter	b/s birds	378	623	1040	2484	1041	112

Illustrated to right:
 Rope Frame with design #8547



**Machine Cross Stitch
 Embroidery**

www.machinecrossstitch.com

Color Stop Thread Sheet

Beach with Driftwood

by Laura Doyle



Design # **Sizes**
 #8549 14 ct 155 x 211mm (6.09 x 8.29")
 #8550 16 ct 129 x 176mm (5.08x 6.91")
 #8551 18 ct 120 x 164mm (4.74 x 6.45")
 Total Stitches - 58,514

Stop #	DMC Color Name	Stitch Part	Cotton	Cotton	Rayon	Rayon	Rayon	Polyester
			50wt DMC	60wt Mettler	40wt Sulky	40wt Rob/Ant	40wt Madeira	40wt Isacord
1	Beige Brown Very Light	shell	842	844	1149	2399	1142	861
2	Beige Light	shell	841	511	1128	2571	1328	1123
3	Beige Brown Medium	shell	840	839	1267	2474	1329	1055
4	Pewter Grey Dark	wood	413	700	1166	2407	1164	132
5	Steel Grey Dark	wood, shell	414	684POLY	1329	2540	1363	152
6	Steel Grey Light	wood, shell	318	724	1328	2592	1212	2674
7	Pearl Grey	wood, shell	415	749	1236	2485	1198	142
8	Pearl Grey Very Light	wood, shell	762	749	1268	2539	1151	182
9	Peach	shell	353	802	1543	2377	1019	1551
10	Coral Light	shell, flowers	352	646	1259	2257	1254	1532
11	Coral Medium	shell	350	913	1020	2329	1307	1701
12	Cream	shell	712	512	1082	2342	1071	870
13	Tan Ultra Very Light	shell, sand	739	515	1127	2335	1149	761
14	Tan	shell, starfish	436	507	1313	2493	1056	832
15	Brown Very Light	shell, starfish	435	658	1126	2400	1126	941
16	Brown Medium	shell, starfish	433	711	1057	2402	1058	1342
17	Coffee Brown Dark	shell	801	711	1129	2629	1145	1346
18	Hunter Green	grass	3346	678	1176	2229	1170	5633
19	Yellow Green Medium	grass	3347	546	1177	2456	1169	5833
20	Baby Blue Medium	water	334	788	1028	2624	1028	3641
21	Baby Blue Light	water	3325	962	1289	2300	1075	3840
22	Beige Brown Medium	b/s shell	840	839	1267	2474	1329	1055
23	Pewter Grey Dark	b/s wood, shell	413	700	1166	2407	1164	132
24	Coral Medium	b/s shell	350	913	1020	2329	1307	1701
25	Brown Very Light	b/s shell	435	658	1126	2400	1126	941

See pages 20-21 for Project Ideas

Color Stop Thread Sheet

Seagulls on Pylon

by Laura Doyle

Design # **Sizes**
 #8552 14 ct 90 x 110mm (3.54 x 4.32")
 #8553 16 ct 75 x 91mm (2.95 x 3.60")
 #8554 18 ct 70 x 85mm (2.76 x 3.36")
 Total Stitches - 14,088



Stop #	DMC Color Name	Stitch Part	Cotton	Cotton	Rayon	Rayon	Rayon	Polyester
			50wt DMC	60wt Mettler	40wt Sulky	40wt Rob/Ant	40wt Madeira	40wt Isacord
1	Snow White	gulls	1	2	1001	2297	1002	17
2	Pearl Grey Very Light	gulls	762	749	1268	2539	1151	182
3	Pearl Grey	gulls	415	749	1236	2485	1198	142
4	Steel Grey Light	gulls, pylon	318	724	1328	2592	1212	2674
5	Black	eyes	310	3	1005	2296	1000	20
6	Yellow Green Light	grass	3348	893	1104	2547	1150	6051
7	Beige Brown Very Dark	grass	838	618	1059	2372	1130	1876
8	Beige Brown Very Light	pylon	842	844	1149	2399	1142	861
9	Beige Light	pylon	841	511	1128	2571	1328	1123
10	Beige Brown Medium	pylon	840	839	1267	2474	1329	1055
11	Baby Blue Very Light	water, sky	775	669	1151	2300	1074	3652
12	Baby Blue Light	water, sky	3325	962	1289	2300	1075	3840
13	Steel Grey Light	b/s gulls	318	724	1328	2592	1212	2674
14	Beige Brown Very Dark	b/s pylon	838	618	1059	2372	1130	1876

Illustrated to right:
 Sudberry Oak Noteboard
 #20038 with design #8553



**Machine Cross Stitch
 Embroidery**

www.machinecrossstitch.com

Color Stop Thread Sheet

Tiny Sailboat

by Laura Doyle

Design # **Sizes**
 #8555 14 ct 81 x 68mm (3.19 x 2.69")
 #8556 16 ct 68 x 57mm (2.66 x 2.24")
 #8557 18 ct 63 x 53mm (2.48 x 2.09")
 Total Stitches - 7,046



Stop #	DMC Color Name	Stitch Part	Cotton	Cotton	Rayon	Rayon	Rayon	Polyester
			50wt DMC	60wt Mettler	40wt Sulky	40wt Rob/Ant	40wt Madeira	40wt Isacord
1	Tan Ultra Very Light	sand	739	515	1127	2335	1149	761
2	Tan	weeds	436	507	1313	2493	1056	832
3	Brown Very Light	weeds	435	658	1126	2400	1126	941
4	Yellow Green Medium	grass	3347	546	1177	2456	1169	5833
5	Baby Blue Very Light	water	775	669	1151	2300	1074	3652
6	Baby Blue Light	water	3325	962	1289	2300	1075	3840
7	Baby Blue Medium	water	334	788	1028	2624	1028	3641
8	Christmas Red	sail	321	600	561	2418	1184	2101
9	Snow White	sail	1	2	1001	2297	1002	17
10	Steel Grey Dark	gull	414	684POLY	1329	2540	1363	152
11	Christmas Red	b/s boat	321	600	561	2418	1184	2101
12	Steel Grey Dark	b/s mast, gulls	414	684POLY	1329	2540	1363	152
13	Hunter Green	b/s grass	3346	678	1176	2229	1170	5633

Illustrated to right:
 Sm. Rd. Frame with design #8556



**Machine Cross Stitch
 Embroidery**

www.machinecrossstitch.com

Project Ideas

Sankaty #2

by Laura Doyle



Illustrated above:
Sudberry Nantucket Basket #30015
with Pincushion Top - design #8511

Great Point #2

by Laura Doyle



Illustrated above:
Sudberry Nantucket Basket #30015
with Pincushion Top - design #8505

Sankaty #1

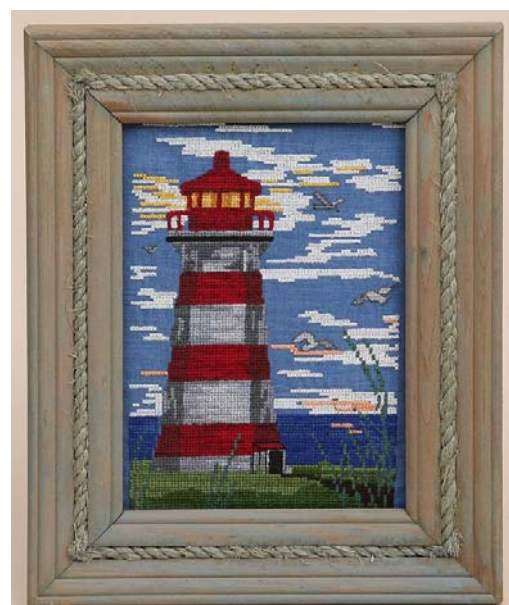
by Laura Doyle



Illustrated above:
Rope Frame with design #8508

Eastern Lighthouse

by Laura Doyle



Illustrated above:
Rope Frame with design #8520

Project Ideas

Hawaiian Lighthouse

by Laura Doyle



Illustrated above:
Rope Frame with design #8517

Seascape w/Fence

by Laura Doyle



Illustrated above:
Rope Frame with design #8544

Beach w/Driftwood

by Laura Doyle



Illustrated above:
Rope Frame with design #8550

Lighthouse & Beach

by Laura Doyle



Illustrated above:
Sudberry Oak Noteboard #20038 - design #8535