

Sun & Sky Quilt

by Ursula Michael



Design # **Sizes**
 #9201 14 ct 119 x 175mm (4.68 x 6.87")
 #9202 16 ct 99 x 145mm (3.90 x 5.73")
 #9203 18 ct 92 x 136mm (3.64 x 5.35")
 Total Stitches - 53,270

Be creative! Use your own color combinations. The possibilities are endless.

Stop #	DMC Color Name	Stitch Part	Cotton	Cotton	Rayon	Rayon	Rayon	Polyester
			50wt DMC	60wt Mettler	40wt Sulky	40wt Rob/Ant	40wt Madeira	40wt Isacord
1	Snow White	all quilt blocks	1	2	1001	2297	1002	17
2	Christmas Red	all quilt blocks	321	600	561	2418	1184	2101
3	Xmas Red Med	all quilt blocks	304	838	1311	2270	1186	1911
4	Garnet Medium	quilt blocks, border	815	601	1312	2225	1181	2113
5	Chartreuse Bright	all quilt blocks	704	903	1332	2321	1248	5610
6	Kelly Green	quilt blocks, border	702	952	1277	2738	1251	5510
7	Xmas Green Light	all quilt blocks	701	847	1101	2410	1051	5613
8	Christmas Green	quilt blocks, border	699	678	1051	2208	1250	5422
9	Xmas Green Light	b/s border	701	847	1101	2410	1051	5613

Illustrated to right:
 Sudberry Picture Frame Box
 #99701 with design #9201



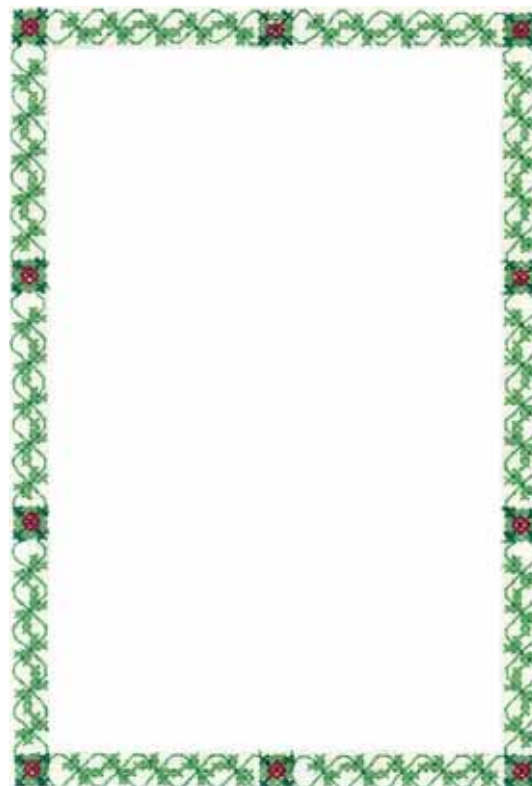
**Machine Cross Stitch
 Embroidery**

www.machinecrossstitch.com

Sun & Sky Border Only

by Ursula Michael

Design # **Sizes**
 #9204 14 ct 119 x 175mm (4.68 x 6.87")
 #9205 16 ct 99 x 145mm (3.90 x 5.73")
 #9206 18 ct 92 x 136mm (3.64 x 5.35")
 Total Stitches - 6,860



Be creative! Use your own color combinations. The possibilities are endless.

Stop #	DMC Color Name	Stitch Part	Cotton	Cotton	Rayon	Rayon	Rayon	Polyester
			50wt DMC	60wt Mettler	40wt Sulky	40wt Rob/Ant	40wt Madeira	40wt Isacord
1	Garnet Medium	squares	815	601	1312	2225	1181	2113
2	Kelly Green	squares, border	702	952	1277	2738	1251	5510
3	Christmas Green	squares	699	678	1051	2208	1250	5422
4	Xmas Green Light	b/s border	701	847	1101	2410	1051	5613

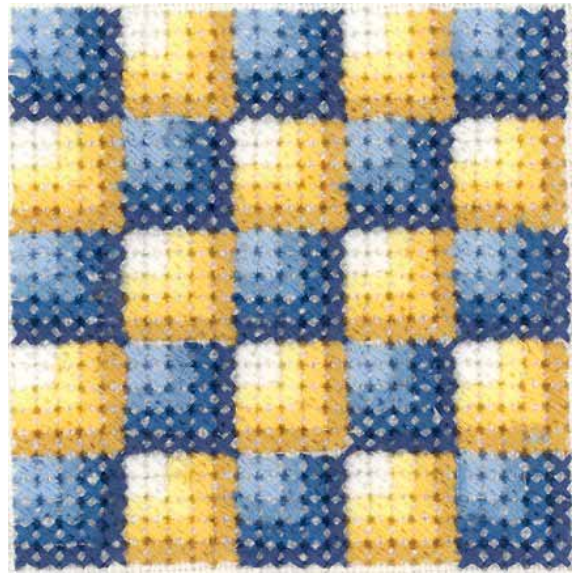


**Machine Cross Stitch
Embroidery**

www.machinecrossstitch.com

Sun & Sky Quilt Block #1

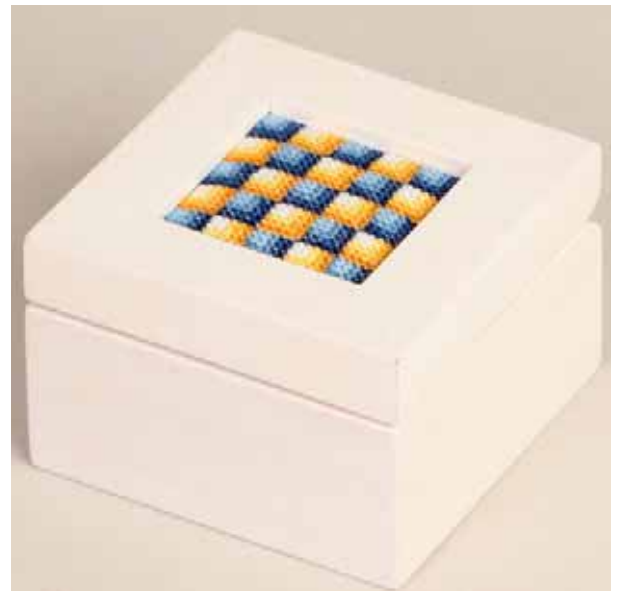
by Ursula Michael



Design # **Sizes**
 #9207 14 ct 45 x 45mm (1.77 x 1.77")
 #9208 16 ct 38 x 38mm (1.48 x 1.48")
 #9209 18 ct 35 x 35mm (1.38 x 1.38")
 Total Stitches - 7,090

Stop #	DMC Color Name	Stitch Part	Cotton	Cotton	Rayon	Rayon	Rayon	Polyester
			50wt DMC	60wt Mettler	40wt Sulky	40wt Rob/Ant	40wt Madeira	40wt Isacord
1	Snow White	yellow block	1	2	1001	2297	1002	17
2	Topaz Very Light	yellow block	727	96	1066	2325	1066	520
3	Topaz	yellow block	725	767	1167	2596	1171	506
4	Topaz Medium	yellow block	783	828POLY	567	2331	1372	824
5	Baby Blue Light	blue block	3325	962	1289	2300	1075	3840
6	Baby Blue Med	blue block	334	788	1028	2624	1028	3641
7	Baby Blue Vry Drk	blue block	312	498	1076	2612	1042	3611
8	Navy Blue	blue block	336	833	1200	2647	1243	3732

Illustrated to right:
 Sudberry White Mini Box
 #99042 with design #9207



Be creative! Use your own color combinations. The possibilities are endless.



**Machine Cross Stitch
Embroidery**

www.machinecrossstitch.com

Sun & Sky Quilt Block #2

by Ursula Michael



Design # **Sizes**
 #9210 14 ct 45 x 45mm (1.77 x 1.77")
 #9211 16 ct 38 x 38mm (1.48 x 1.48")
 #9212 18 ct 35 x 35mm (1.38 x 1.38")
 Total Stitches - 7,520

Stop #	DMC Color Name	Stitch Part	Cotton	Cotton	Rayon	Rayon	Rayon	Polyester
			50wt DMC	60wt Mettler	40wt Sulky	40wt Rob/Ant	40wt Madeira	40wt Isacord
1	Snow White	block	1	2	1001	2297	1002	17
2	Coral Medium	block	350	913	1020	2329	1307	1701
3	Coral Dark	block	349	821	1037	2263	1039	1704
4	Garnet	block	816	838	1190	2249	1381	1912
5	Chartreuse Bright	block	704	903	1332	2321	1248	5610
6	Chartreuse	block	703	546	1510	2279	1050	5531
7	Kelly Green	block	702	952	1277	2738	1251	5510
8	Christmas Green	block	699	678	1051	2208	1250	5422

Be creative! Use your own color combinations. The possibilities are endless.



Machine Cross Stitch
Embroidery

www.machinecrossstitch.com

Sun & Sky Quilt Block #3

by Ursula Michael



Design # **Sizes**
 #9213 14 ct 45 x 45mm (1.77 x 1.77")
 #9214 16 ct 38 x 38mm (1.48 x 1.48")
 #9215 18 ct 35 x 35mm (1.38 x 1.38")
 Total Stitches - 6,980

Stop #	DMC Color Name	Stitch Part	Cotton	Cotton	Rayon	Rayon	Rayon	Polyester
			50wt DMC	60wt Mettler	40wt Sulky	40wt Rob/Ant	40wt Madeira	40wt Isacord
1	Snow White	block	1	2	1001	2297	1002	17
2	Violet Light	block	554	575	1193	2285	1031	3045
3	Violet	block	553	650	1033	2424	1235	2830
4	Violet Medium	block	552	583	1255	2490	1033	2810
5	Pistac Grn Vry Lgt	block	369	536	1275	2555	1100	5650
6	Pistachio Grn Light	block	368	544	1100	2311	1047	5115
7	Pistachio Grn Med	block	320	549	1276	2278	1098	5101
8	Pistac Grn Vry Drk	block	319	850	1174	2392	1370	5555

Be creative! Use your own color combinations. The possibilities are endless.



Machine Cross Stitch
Embroidery

www.machinecrossstitch.com

Sun & Sky Quilt

Block #4

by Ursula Michael



Design #

Sizes

#9216 14 ct 45 x 45mm (1.77 x 1.77")

#9217 16 ct 38 x 38mm (1.48 x 1.48")

#9218 18 ct 35 x 35mm (1.38 x 1.38")

Total Stitches - 6,780

Stop #	DMC Color Name	Stitch Part	Cotton	Cotton	Rayon	Rayon	Rayon	Polyester
			50wt DMC	60wt Mettler	40wt Sulky	40wt Rob/Ant	40wt Madeira	40wt Isacord
1	Snow White	block	1	2	1001	2297	1002	17
2	Christmas Red	block	321	600	561	2418	1184	2101
3	Xmas Red Med	block	304	838	1311	2270	1186	1911
4	Garnet Medium	block	815	601	1312	2225	1181	2113
5	Chartreuse Bright	block	704	903	1332	2321	1248	5610
6	Kelly Green	block	702	952	1277	2738	1251	5510
7	Xmas Green Light	block	701	847	1101	2410	1051	5613
8	Christmas Green	block	699	678	1051	2208	1250	5422

Be creative! Use your own color combinations. The possibilities are endless.



Machine Cross Stitch
Embroidery

www.machinecrossstitch.com

Sun & Sky Quilt Block #5

by Ursula Michael



Design #

Sizes

#9219 14 ct 45 x 45mm (1.77 x 1.77")

#9220 16 ct 38 x 38mm (1.48 x 1.48")

#9221 18 ct 35 x 35mm (1.38 x 1.38")

Total Stitches - 6,810

Stop #	DMC Color Name	Stitch Part	Cotton	Cotton	Rayon	Rayon	Rayon	Polyester
			50wt DMC	60wt Mettler	40wt Sulky	40wt Rob/Ant	40wt Madeira	40wt Isacord
1	Snow White	block	1	2	1001	2297	1002	17
2	Christmas Red	block	321	600	561	2418	1184	2101
3	Xmas Red Med	block	304	838	1311	2270	1186	1911
4	Garnet Medium	block	815	601	1312	2225	1181	2113
5	Chartreuse Bright	block	704	903	1332	2321	1248	5610
6	Kelly Green	block	702	952	1277	2738	1251	5510
7	Xmas Green Light	block	701	847	1101	2410	1051	5613
8	Christmas Green	block	699	678	1051	2208	1250	5422

Be creative! Use your own color combinations. The possibilities are endless.



**Machine Cross Stitch
Embroidery**

www.machinecrossstitch.com

Sun & Sky Quilt Block #6

by Ursula Michael

Design # Sizes

#9222 14 ct 45 x 45mm (1.77 x 1.77")

#9223 16 ct 38 x 38mm (1.48 x 1.48")

#9224 18 ct 35 x 35mm (1.38 x 1.38")

Total Stitches - 7,630



Stop #	DMC Color Name	Stitch Part	Cotton	Cotton	Rayon	Rayon	Rayon	Polyester
			50wt DMC	60wt Mettler	40wt Sulky	40wt Rob/Ant	40wt Madeira	40wt Isacord
1	Snow White	block	1	2	1001	2297	1002	17
2	Christmas Red	block	321	600	561	2418	1184	2101
3	Xmas Red Med	block	304	838	1311	2270	1186	1911
4	Garnet Medium	block	815	601	1312	2225	1181	2113
5	Chartreuse Bright	block	704	903	1332	2321	1248	5610
6	Kelly Green	block	702	952	1277	2738	1251	5510
7	Xmas Green Light	block	701	847	1101	2410	1051	5613
8	Christmas Green	block	699	678	1051	2208	1250	5422

Be creative! Use your own color combinations. The possibilities are endless.



**Machine Cross Stitch
Embroidery**

www.machinecrossstitch.com

Color Stop Thread Sheet

Sun & Sky Quilt Block #1 with Border

by Ursula Michael



Design # **Sizes**
 #9225 14 ct 63 x 63mm (2.48 x 2.48")
 #9226 16 ct 52 x 52mm (2.07 x 2.07")
 #9227 18 ct 49 x 49mm (1.93 x 1.93")
 Total Stitches - 9,816

Stop #	DMC Color Name	Stitch Part	Cotton	Cotton	Rayon	Rayon	Rayon	Polyester
			50wt DMC	60wt Mettler	40wt Sulky	40wt Rob/Ant	40wt Madeira	40wt Isacord
1	Snow White	block	1	2	1001	2297	1002	17
2	Pink Medium	block	776	227POLY	1115	2501	1116	2155
3	Rose Medium	block	899	805	1117	2375	1108	1755
4	Very Dark Rose	block, corners	326	769	1034	2249	1187	2113
5	Yellow Green Lgt	block	3348	893	1104	2547	1150	6051
6	Yellow Green Med	block, border	3347	546	1177	2456	1169	5833
7	Hunter Green	block	3346	678	1176	2229	1170	5633
8	Hunter Grn Vry Drk	block, border	895	714	1175	2323	1189	5555
9	Hunter Green	b/s border	3346	678	1176	2229	1170	5633

Illustrated to right:
 Sudberry White Mini Box
 #99042 with design #9227

Be creative! Use your own color combinations. The possibilities are endless.



**Machine Cross Stitch
Embroidery**

www.machinecrossstitch.com



Color Stop Thread Sheet

Sun & Sky Quilt

Block #2 with Border

by Ursula Michael



Design # **Sizes**
 #9228 14 ct 63 x 63mm (2.48 x 2.48")
 #9229 16 ct 52 x 52mm (2.07 x 2.07")
 #9230 18 ct 49 x 49mm (1.93 x 1.93")
 Total Stitches - 10,248

Stop #	DMC Color Name	Stitch Part	Cotton	Cotton	Rayon	Rayon	Rayon	Polyester
			50wt DMC	60wt Mettler	40wt Sulky	40wt Rob/Ant	40wt Madeira	40wt Isacord
1	Snow White	block	1	2	1001	2297	1002	17
2	Violet Light	block	554	575	1193	2285	1031	3045
3	Violet	block	553	650	1033	2424	1235	2830
4	Violet Medium	block, corners	552	583	1255	2490	1033	2810
5	Pistac Grn Vry Lgt	block	369	536	1275	2555	1100	5650
6	Pistachio Grn Light	block, border	368	544	1100	2311	1047	5115
7	Pistachio Grn Med	center	320	549	1276	2278	1098	5101
8	Pistac Grn Vry Drk	block, border	319	850	1174	2392	1370	5555
9	Pistachio Grn Med	b/s border	320	549	1276	2278	1098	5101

Be creative! Use your own color combinations. The possibilities are endless.



www.machinecrossstitch.com

Color Stop Thread Sheet

Sun & Sky Quilt Border

#3 with Border

by Ursula Michael

Design # Sizes

#9231 14 ct 63 x 63mm (2.48 x 2.48")

#9232 16 ct 52 x 52mm (2.07 x 2.07")

#9233 18 ct 49 x 49mm (1.93 x 1.93")

Total Stitches - 9,708



Stop #	DMC Color Name	Stitch Part	Cotton	Cotton	Rayon	Rayon	Rayon	Polyester
			50wt DMC	60wt Mettler	40wt Sulky	40wt Rob/Ant	40wt Madeira	40wt Isacord
1	Snow White	block	1	2	1001	2297	1002	17
2	Topaz Very Light	block	727	96	1066	2325	1066	520
3	Topaz Medium	block, corners	783	828POLY	567	2331	1372	824
4	Topaz	block	725	767	1167	2596	1171	506
5	Baby Blue Light	block	3325	962	1289	2300	1075	3840
6	Baby Blue Med	block, border	334	788	1028	2624	1028	3641
7	Baby Blue Vry Drk	block	312	498	1076	2612	1042	3611
8	Navy Blue	block, corners	336	833	1200	2647	1243	3732
9	Baby Blue Vry Drk	b/s border	312	498	1076	2612	1042	3611

Be creative! Use your own color combinations. The possibilities are endless.



**Machine Cross Stitch
Embroidery**

www.machinecrossstitch.com

*Color Stop Thread Sheet***Sun & Sky Quilt Block #4
with Border***by Ursula Michael***Design # Sizes**

#9234 14 ct 63 x 63mm (2.48 x 2.48")

#9235 16 ct 52 x 52mm (2.07 x 2.07")

#9236 18 ct 49 x 49mm (1.93 x 1.93")

Total Stitches - 9,510

Stop #	DMC Color Name	Stitch Part	Cotton	Cotton	Rayon	Rayon	Rayon	Polyester
			50wt DMC	60wt Mettler	40wt Sulky	40wt Rob/Ant	40wt Madeira	40wt Isacord
1	Snow White	block	1	2	1001	2297	1002	17
2	Christmas Red	block	321	600	561	2418	1184	2101
3	Xmas Red Med	block	304	838	1311	2270	1186	1911
4	Garnet Medium	block, corners	815	601	1312	2225	1181	2113
5	Chartreuse Bright	block	704	903	1332	2321	1248	5610
6	Kelly Green	block, border	702	952	1277	2738	1251	5510
7	Xmas Green Light	block	701	847	1101	2410	1051	5613
8	Christmas Green	block, corners	699	678	1051	2208	1250	5422
9	Xmas Green Light	b/s border	701	847	1101	2410	1051	5613

Be creative! Use your own color combinations. The possibilities are endless.

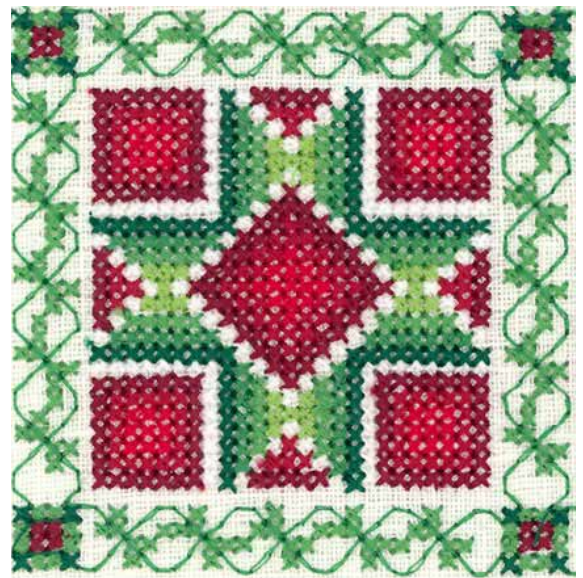


**Machine Cross Stitch
Embroidery**

www.machinecrossstitch.com

Sun & Sky Quilt Block #5 with Border

by Ursula Michael



Design # **Sizes**
 #9237 14 ct 63 x 63mm (2.48 x 2.48")
 #9238 16 ct 52 x 52mm (2.07 x 2.07")
 #9239 18 ct 49 x 49mm (1.93 x 1.93")
 Total Stitches - 9,538

Stop #	DMC Color Name	Stitch Part	Cotton	Cotton	Rayon	Rayon	Rayon	Polyester
			50wt DMC	60wt Mettler	40wt Sulky	40wt Rob/Ant	40wt Madeira	40wt Isacord
1	Snow White	block	1	2	1001	2297	1002	17
2	Christmas Red	block	321	600	561	2418	1184	2101
3	Xmas Red Med	block	304	838	1311	2270	1186	1911
4	Garnet Medium	block, corners	815	601	1312	2225	1181	2113
5	Chartreuse Bright	block	704	903	1332	2321	1248	5610
6	Kelly Green	block, border	702	952	1277	2738	1251	5510
7	Xmas Green Light	block	701	847	1101	2410	1051	5613
8	Christmas Green	block, corners	699	678	1051	2208	1250	5422
9	Xmas Green Light	b/s border	701	847	1101	2410	1051	5613

Be creative! Use your own color combinations. The possibilities are endless.



**Machine Cross Stitch
Embroidery**

www.machinecrossstitch.com

Sun & Sky Quilt Block #6 with Border

by Ursula Michael



Design #

Sizes

#9240 14 ct 63 x 63mm (2.48 x 2.48")

#9241 16 ct 52 x 52mm (2.07 x 2.07")

#9242 18 ct 49 x 49mm (1.93 x 1.93")

Total Stitches - 10,360

Stop #	DMC Color Name	Stitch Part	Cotton	Cotton	Rayon	Rayon	Rayon	Polyester
			50wt DMC	60wt Mettler	40wt Sulky	40wt Rob/Ant	40wt Madeira	40wt Isacord
1	Snow White	center	1	2	1001	2297	1002	17
2	Christmas Red	block	321	600	561	2418	1184	2101
3	Xmas Red Med	block	304	838	1311	2270	1186	1911
4	Garnet Medium	block, corner	815	601	1312	2225	1181	2113
5	Chartreuse Bright	block	704	903	1332	2321	1248	5610
6	Kelly Green	block, corners	702	952	1277	2738	1251	5510
7	Xmas Green Light	block	701	847	1101	2410	1051	5613
8	Christmas Green	block, corners	699	678	1051	2208	1250	5422
9	Xmas Green Light	b/s border	701	847	1101	2410	1051	5613

Be creative! Use your own color combinations. The possibilities are endless.



Machine Cross Stitch
Embroidery

www.machinecrossstitch.com

Sun & Sky Four Quilt Block #1

by Ursula Michael



Design # **Sizes**
 #9243 14 ct 119x 119mm (4.68 x 4.68")
 #9244 16 ct 99 x 99mm (3.90 x 3.90")
 #9245 18 ct 92 x 92mm (3.64 x 3.64")
 Total Stitches - 35,872

Stop #	DMC Color Name	Stitch Part	Cotton	Cotton	Rayon	Rayon	Rayon	Polyester
			50wt DMC	60wt Mettler	40wt Sulky	40wt Rob/Ant	40wt Madeira	40wt Isacord
1	Snow White	blocks	1	2	1001	2297	1002	17
2	Christmas Red	blocks	321	600	561	2418	1184	2101
3	Xmas Red Dark	blocks	498	601	1169	2622	1183	1912
4	Garnet Medium	blocks, corners	815	601	1312	2225	1181	2113
5	Tan Very Light	blocks	738	520	1055	2582	1055	1140
6	Tan	blocks, corners	436	507	1313	2493	1056	832
7	Brown Very Light	blocks	435	658	1126	2400	1126	941
8	Brown Medium	blocks, corners	433	711	1057	2402	1058	1342
9	Brown Very Light	b/s border	435	658	1126	2400	1126	941

Illustrated to right:
 Sudberry Simply Square Box
 #99721 with design #9243



Be creative! Use your own color combinations. The possibilities are endless.



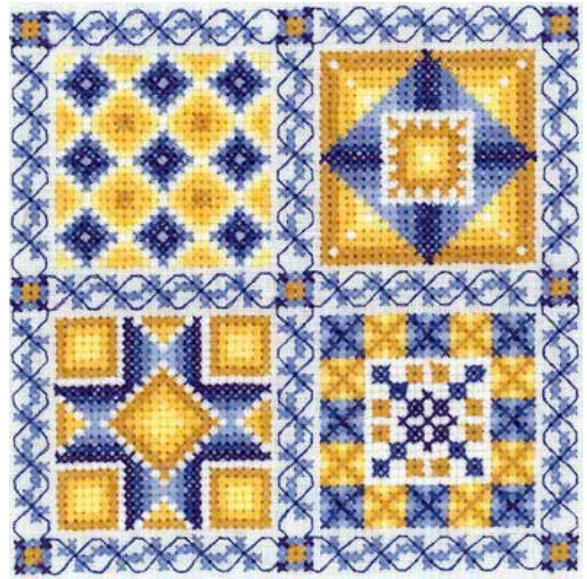
**Machine Cross Stitch
Embroidery**

www.machinecrossstitch.com

Sun & Sky Four Quilt Block #2

by Ursula Michael

Design # **Sizes**
 #9246 14 ct 119 x 119mm (4.68 x 4.68")
 #9247 16 ct 99 x 99mm (3.90 x 3.90")
 #9248 18 ct 92 x 92mm (3.64 x 3.64")
 Total Stitches - 35,706



Stop #	DMC Color Name	Stitch Part	Cotton	Cotton	Rayon	Rayon	Rayon	Polyester
			50wt DMC	60wt Mettler	40wt Sulky	40wt Rob/Ant	40wt Madeira	40wt Isacord
1	Snow White	blocks	1	2	1001	2297	1002	17
2	Topaz Very Light	blocks	727	96	1066	2325	1066	520
3	Topaz	blocks	725	767	1167	2596	1171	506
4	Topaz Medium	blocks, corners	783	828POLY	567	2331	1372	824
5	Baby Blue Light	blocks	3325	962	1289	2300	1075	3840
6	Baby Blue Med	blocks, border	334	788	1028	2624	1028	3641
7	Baby Blue Vry Drk	blocks	312	498	1076	2612	1042	3611
8	Navy Blue	blocks, corners	336	833	1200	2647	1243	3732
9	Baby Blue Vry Drk	b/s border	312	498	1076	2612	1042	3611

Illustrated to right:
 Sudberry Simply Square
 Box #99711 with design
 #9248 with a different color
 combination



Be creative! Use your own color combinations. The possibilities are endless.



**Machine Cross Stitch
Embroidery**

www.machinecrossstitch.com

Color Stop Thread Sheet

Country Goose Clock

by Donna Vermillion

Design # Sizes

#9249 14 ct 106 x 151mm (4.18 x 5.95")

#9250 16 ct 89 x 126mm (3.48 x 4.96")

#9251 18 ct 83 x 118mm (3.25 x 4.63")

Total Stitches - 28,492



Stop #	DMC Color Name	Stitch Part	Cotton	Cotton	Rayon	Rayon	Rayon	Polyester
			50wt DMC	60wt Mettler	40wt Sulky	40wt Rob/Ant	40wt Madeira	40wt Isacord
1	Snow White	quilts, geese	1	2	1001	2297	1002	17
2	Pearl Grey	quilts, geese	415	749	1236	2485	1198	142
3	Tan Light	quilts, beaks, feet	437	517	562	2203	1256	1141
4	Christmas Red	quilts, hearts	321	600	561	2418	1184	2101
5	Xmas Red Med	quilts, dial	304	838	1311	2270	1186	1911
6	Xmas Red Dark	quilts	498	601	1169	2622	1183	1912
7	Baby Blue Light	ribbons	3325	962	1289	2300	1075	3840
8	Baby Blue Med	ribbons, quilts, eyes	334	788	1028	2624	1028	3641
9	Baby Blue Vry Drk	quilts, border	312	498	1076	2612	1042	3611
10	Xmas Red Dark	b/s dial	498	601	1169	2622	1183	1912
11	Baby Blue Vry Drk	b/s ribbons	312	498	1076	2612	1042	3611
12	Brown Very Light	b/s quilts, #, geese	435	658	1126	2400	1126	941

Illustrated to right:
Sudberry Petite Mantle Clock
#48111 with design #9249



Machine Cross Stitch
Embroidery

www.machinecrossstitch.com

Color Stop Thread Sheet

Four Ducks

Design #	Sizes
#9252	14 ct 126 x 175mm (4.96 x 6.87")
#9253	16 ct 105 x 145mm (4.13 x 5.73")
#9254	18 ct 98 x 136mm (3.86 x 5.35")
Total Stitches - 71,936	



Stop #	DMC Color Name	Stitch Part	Cotton	Cotton	Rayon	Rayon	Rayon	Polyester
			50wt DMC	60wt Mettler	40wt Sulky	40wt Rob/Ant	40wt Madeira	40wt Isacord
1	Snow White	ducks	1	2	1001	2297	1002	17
2	Tangerine	beaks, feet	740	953	1078	2330	1278	1300
3	Topaz Light	bows, border	726	500	1135	2408	1064	713
4	Xmas Green Light	border	701	847	1101	2410	1051	5613
5	Royal Blue Dark	optional background	796	885	1293	2437	1166	3622
6	Black	b/s all	310	3	1005	2296	1000	20

Illustrated to right:
Frame with design #9254



Machine Cross Stitch
Embroidery

www.machinecrossstitch.com

Color Stop Thread Sheet

Mini Basket Quilt



Design # **Sizes**
 #9255 14 ct 52 x 52mm (2.06 x 2.06")
 #9256 16 ct 44 x 44mm (1.71 x 1.71")
 #9257 18 ct 41 x 41mm (1.60 x 1.60")
 Total Stitches - 3,200

Stop #	DMC Color Name	Stitch Part	Cotton	Cotton	Rayon	Rayon	Rayon	Polyester
			50wt DMC	60wt Mettler	40wt Sulky	40wt Rob/Ant	40wt Madeira	40wt Isacord
1	Pistac Grn Vry Drk	leaves	319	850	1174	2392	1370	5555
2	Garnet	heart	816	838	1190	2249	1381	1912
3	Tan Light	basket	437	517	562	2203	1256	1141
4	Navy Blue Medium	optional border	311	790	1143	2534	1242	3732

Illustrated to right:
 Sudberry Red Mini Box
 #99046 with design #9256



**Machine Cross Stitch
 Embroidery**

www.machinecrossstitch.com

Color Stop Thread Sheet

Mini House Quilt



Design # **Sizes**
 #9258 14 ct 52 x 52mm (2.06 x 2.06")
 #9259 16 ct 44 x 44mm (1.71 x 1.71")
 #9260 18 ct 41 x 41mm (1.60 x 1.60")
 Total Stitches - 4,030

Stop #	DMC Color Name	Stitch Part	Cotton	Cotton	Rayon	Rayon	Rayon	Polyester
			50wt DMC	60wt Mettler	40wt Sulky	40wt Rob/Ant	40wt Madeira	40wt Isacord
1	Pistachio Grn Med	house	320	549	1276	2278	1098	5101
2	Pistac Grn Vry Drk	house	319	850	1174	2392	1370	5555
3	Beige Brown Med	roof	840	839	1267	2474	1329	1055
4	Tan Light	chimney	437	517	562	2203	1256	1141
5	Navy Blue Medium	optional border	311	790	1143	2534	1242	3732

Illustrated to right:
 Sudberry Mahogany Mini Box
 #99041 with design #9259



**Machine Cross Stitch
 Embroidery**

www.machinecrossstitch.com

Color Stop Thread Sheet

Mini Tree Quilt

Design # **Sizes**
 #9261 14 ct 52 x 52mm (2.06 x 2.06")
 #9262 16 ct 44 x 44mm (1.71 x 1.71")
 #9263 18 ct 41 x 41mm (1.60 x 1.60")
 Total Stitches - 2,950



Stop #	DMC Color Name	Stitch Part	Cotton	Cotton	Rayon	Rayon	Rayon	Polyester
			50wt DMC	60wt Mettler	40wt Sulky	40wt Rob/Ant	40wt Madeira	40wt Isacord
1	Pistac Grn Vry Drk	leaves	319	850	1174	2392	1370	5555
2	Beige Brown Med	trunk	840	839	1267	2474	1329	1055
3	Navy Blue Medium	optional border	311	790	1143	2534	1242	3732

Illustrated to right:
 Sudberry Black Mini Box
 #99047 with design #9262



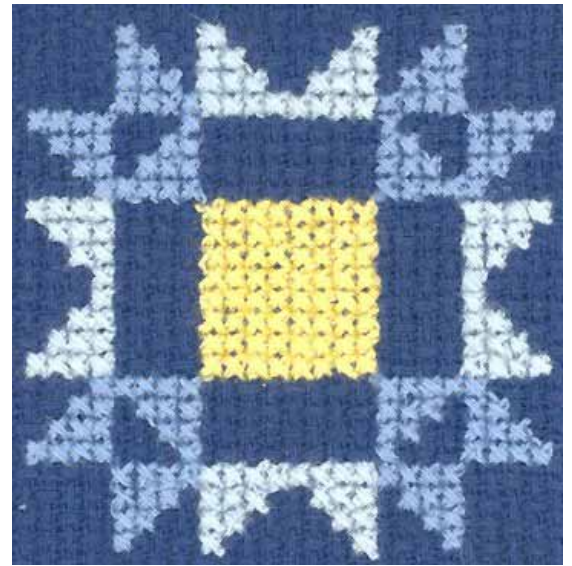
**Machine Cross Stitch
 Embroidery**

www.machinecrossstitch.com

Color Stop Thread Sheet

Ribbons Ear

by Evelyn Chapman



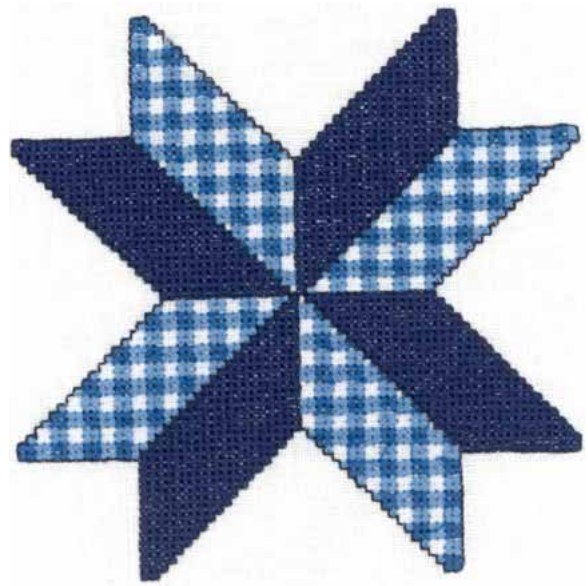
Design # **Sizes**
 #9264 14 ct 54 x 54mm (2.13 x 2.13")
 #9265 16 ct 45 x 45mm (1.77 x 1.77")
 #9266 18 ct 42 x 42mm (1.65 x 1.65")
 Total Stitches - 3,900

Stop #	DMC Color Name	Stitch Part	Cotton	Cotton	Rayon	Rayon	Rayon	Polyester
			50wt DMC	60wt Mettler	40wt Sulky	40wt Rob/Ant	40wt Madeira	40wt Isacord
1	Topaz Very Light	center	727	96	1066	2325	1066	520
2	Baby Blue Light	block	3325	962	1289	2300	1075	3840
3	Baby Blue Med	block	334	788	1028	2624	1028	3641
4	Baby Blue Med	optional border	334	788	1028	2624	1028	3641



**Machine Cross Stitch
Embroidery**

www.machinecrossstitch.com

*Color Stop Thread Sheet***Eight Point Star***by Evelyn Chapman***Design #****Sizes**

#9267 14 ct 126 x 126mm (4.96 x 4.96")

#9268 16 ct 105 x 105mm (4.13 x 4.13")

#9269 18 ct 98 x 98mm (3.86 x 3.86")

Total Stitches - 29,476

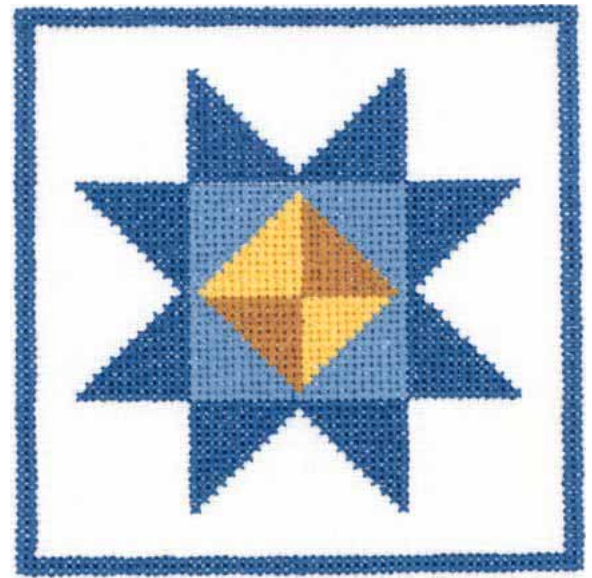
Stop #	DMC Color Name	Stitch Part	Cotton	Cotton	Rayon	Rayon	Rayon	Polyester
			50wt DMC	60wt Mettler	40wt Sulky	40wt Rob/Ant	40wt Madeira	40wt Isacord
1	Baby Blue Vry Drk	plaid	312	498	1076	2612	1042	3611
2	Baby Blue Med	plaid	334	788	1028	2624	1028	3641
3	Navy Blue Dark	solid	823	792	1044	2303	1044	3554
4	Snow White	optional plaid	1	2	1001	2297	1002	17
5	Black	b/s all	310	3	1005	2296	1000	20

Illustrated to right:
Sudberry Simply Square Box
#99711 with design #9269



**Machine Cross Stitch
Embroidery**

www.machinecrossstitch.com

*Color Stop Thread Sheet***Double Saw Tooth Star***by Evelyn Chapman***Design #****Sizes**

#9270 14 ct 117 x 117mm (4.61 x 4.61")

#9271 16 ct 97 x 97mm (3.84 x 3.84")

#9272 18 ct 91 x 91mm (3.58 x 3.58")

Stop #	DMC Color Name	Stitch Part	Cotton	Cotton	Rayon	Rayon	Rayon	Polyester
			50wt DMC	60wt Mettler	40wt Sulky	40wt Rob/Ant	40wt Madeira	40wt Isacord
1	Topaz	center	725	767	1167	2596	1171	506
2	Topaz Medium	center	783	828POLY	567	2331	1372	824
3	Baby Blue Med	center	334	788	1028	2624	1028	3641
4	Baby Blue Vry Drk	star	312	498	1076	2612	1042	3611
5	Baby Blue Vry Drk	optional border	312	498	1076	2612	1042	3611

Illustrated to right:
Sudberry Simply Square Box
#99711 with design #9271



**Machine Cross Stitch
Embroidery**

www.machinecrossstitch.com

Color Stop Thread Sheet

Wyoming Valley

by Evelyn Chapman



Design # **Sizes**
 #9273 14 ct 119 x 119mm (4.68 x 4.68")
 #9274 16 ct 99 x 99mm (3.90 x 3.90")
 #9275 18 ct 92 x 92mm (3.64 x 3.64")
 Total Stitches - 30,470

Stop #	DMC Color Name	Stitch Part	Cotton	Cotton	Rayon	Rayon	Rayon	Polyester
			50wt DMC	60wt Mettler	40wt Sulky	40wt Rob/Ant	40wt Madeira	40wt Isacord
1	Pistachio Grn Med	center	320	549	1276	2278	1098	5101
2	Pistac Grn Vry Drk	center	319	850	1174	2392	1370	5555
3	Violet	star	553	650	1033	2424	1235	2830
4	Violet Medium	star	552	583	1255	2490	1033	2810
5	Violet Very Dark	star	550	581	1122	2381	1112	2905
6	Violet Very Dark	optional border	550	581	1122	2381	1112	2905
7	Black	b/s all	310	3	1005	2296	1000	20

Illustrated to right:
 Sudberry Simply Square Box
 #99711 with design #9274



**Machine Cross Stitch
 Embroidery**

www.machinecrossstitch.com

Color Stop Thread Sheet

Mini Square #1

by Evelyn Chapman



Design

Sizes

#9276 14 ct 72 x 72mm (2.83 x 2.83")

#9277 16 ct 60 x 60mm (2.36 x 2.36")

#9278 18 ct 56 x 56mm (2.20 x 2.20")

Total Stitches - 8,030

Stop #	DMC Color Name	Stitch Part	Cotton	Cotton	Rayon	Rayon	Rayon	Polyester
			50wt DMC	60wt Mettler	40wt Sulky	40wt Rob/Ant	40wt Madeira	40wt Isacord
1	Violet	diamond	553	650	1033	2424	1235	2830
2	Violet Medium	star	552	583	1255	2490	1033	2810
3	Pistachio Grn Med	points	320	549	1276	2278	1098	5101
4	Pistac Grn Vry Drk	points	319	850	1174	2392	1370	5555
5	Violet Very Dark	optional border	550	581	1122	2381	1112	2905
6	Black	b/s all	310	3	1005	2296	1000	20

Illustrated to right:
Sudberry White Mini Box
#99042 with design #9278
without border



**Machine Cross Stitch
Embroidery**

www.machinecrossstitch.com

Color Stop Thread Sheet

Mini Square #2

by Evelyn Chapman



Design #	Sizes
#9279	14 ct 72 x 72mm (2.83 x 2.83")
#9280	16 ct 60 x 60mm (2.36 x 2.36")
#9281	18 ct 56 x 56mm (2.20 x 2.20")
Total Stitches - 9,166	

Stop #	DMC Color Name	Stitch Part	Cotton	Cotton	Rayon	Rayon	Rayon	Polyester
			50wt DMC	60wt Mettler	40wt Sulky	40wt Rob/Ant	40wt Madeira	40wt Isacord
1	Christmas Red	inner diamond	321	600	561	2418	1184	2101
2	Xmas Red Dark	star, point ends	498	601	1169	2622	1183	1912
3	Garnet Dark	outer diamond	814	738	1035	2252	1389	2222
4	Tan Light	point	437	517	562	2203	1256	1141
5	Brown Very Light	point	435	658	1126	2400	1126	941
6	Garnet	optional border	816	838	1190	2249	1381	1912
7	Black	b/s all	310	3	1005	2296	1000	20

Illustrated to right:
Sudberry Red Mini Box
#99046 with design #9281
without border



**Machine Cross Stitch
Embroidery**

www.machinecrossstitch.com

Color Stop Thread Sheet

Mini Square #3

by Evelyn Chapman



Design #	Sizes
#9282	14 ct 72 x 72mm (2.83 x 2.83")
#9283	16 ct 60 x 60mm (2.36 x 2.36")
#9284	18 ct 56 x 56mm (2.20 x 2.20")
Total Stitches - 7,110	

Stop #	DMC Color Name	Stitch Part	Cotton	Cotton	Rayon	Rayon	Rayon	Polyester
			50wt DMC	60wt Mettler	40wt Sulky	40wt Rob/Ant	40wt Madeira	40wt Isacord
1	Baby Blue Light	middle	3325	962	1289	2300	1075	3840
2	Baby Blue Med	middle	334	788	1028	2624	1028	3641
3	Baby Blue Vry Drk	inner border	312	498	1076	2612	1042	3611
4	Navy Blue	dark border	336	833	1200	2647	1243	3732
5	Navy Blue Dark	optional border	823	792	1044	2303	1044	3554
6	Black	b/s all	310	3	1005	2296	1000	20

Illustrated to right:
Sudberry White Mini Box
#99042 with design #9284
without border



www.machinecrossstitch.com

Color Stop Thread Sheet

Mini Square #4

by Evelyn Chapman



Design # **Sizes**
 #9285 14 ct 72 x 72mm (2.83 x 2.83")
 #9286 16 ct 60 x 60mm (2.36 x 2.36")
 #9287 18 ct 56 x 56mm (2.20 x 2.20")
 Total Stitches - 8,390

Stop #	DMC Color Name	Stitch Part	Cotton	Cotton	Rayon	Rayon	Rayon	Polyester
			50wt DMC	60wt Mettler	40wt Sulky	40wt Rob/Ant	40wt Madeira	40wt Isacord
1	Rose Medium	stars	899	805	1117	2375	1108	1755
2	Rose	stars	335	923	1307	2237	1309	2320
3	Very Dark Rose	star, center	326	769	1034	2249	1187	2113
4	Hunter Green	triangles	3346	678	1176	2229	1170	5633
5	Hunter Grn Vry Drk	triangles	895	714	1175	2323	1189	5555
6	Pistach Grn Ultra D.	optional border	890	714	1103	2631	1103	5374
7	Black	b/s all	310	3	1005	2296	1000	20

Illustrated to right:
 Sudberry Red Mini Box
 #99046 with design #9287
 without border



**Machine Cross Stitch
 Embroidery**

www.machinecrossstitch.com

Color Stop Thread Sheet

Mini Square #5

by Evelyn Chapman



Design # **Sizes**
 #9288 14 ct 72 x 72mm (2.83 x 2.83")
 #9289 16 ct 60 x 60mm (2.36 x 2.36")
 #9290 18 ct 56 x 56mm (2.20 x 2.20")
 Total Stitches - 11,552

Stop #	DMC Color Name	Stitch Part	Cotton	Cotton	Rayon	Rayon	Rayon	Polyester
			50wt DMC	60wt Mettler	40wt Sulky	40wt Rob/Ant	40wt Madeira	40wt Isacord
1	Violet Light	block	554	575	1193	2285	1031	3045
2	Violet Medium	block	552	583	1255	2490	1033	2810
3	Violet Very Dark	block	550	581	1122	2381	1112	2905
4	Violet	optional border	553	650	1033	2424	1235	2830
5	Black	b/s all	310	3	1005	2296	1000	20

Illustrated to right:
 Sudberry Black Mini Box
 #99047 with design #9290
 without border



**Machine Cross Stitch
 Embroidery**

www.machinecrossstitch.com